

Customer :

customer

Customer part :

customer part

Comment :

Comment

S1=1.97

S2=2.58

Tmax=457

Tp S2=496.0

PI=0.43

HI=117

Sample =1625.60

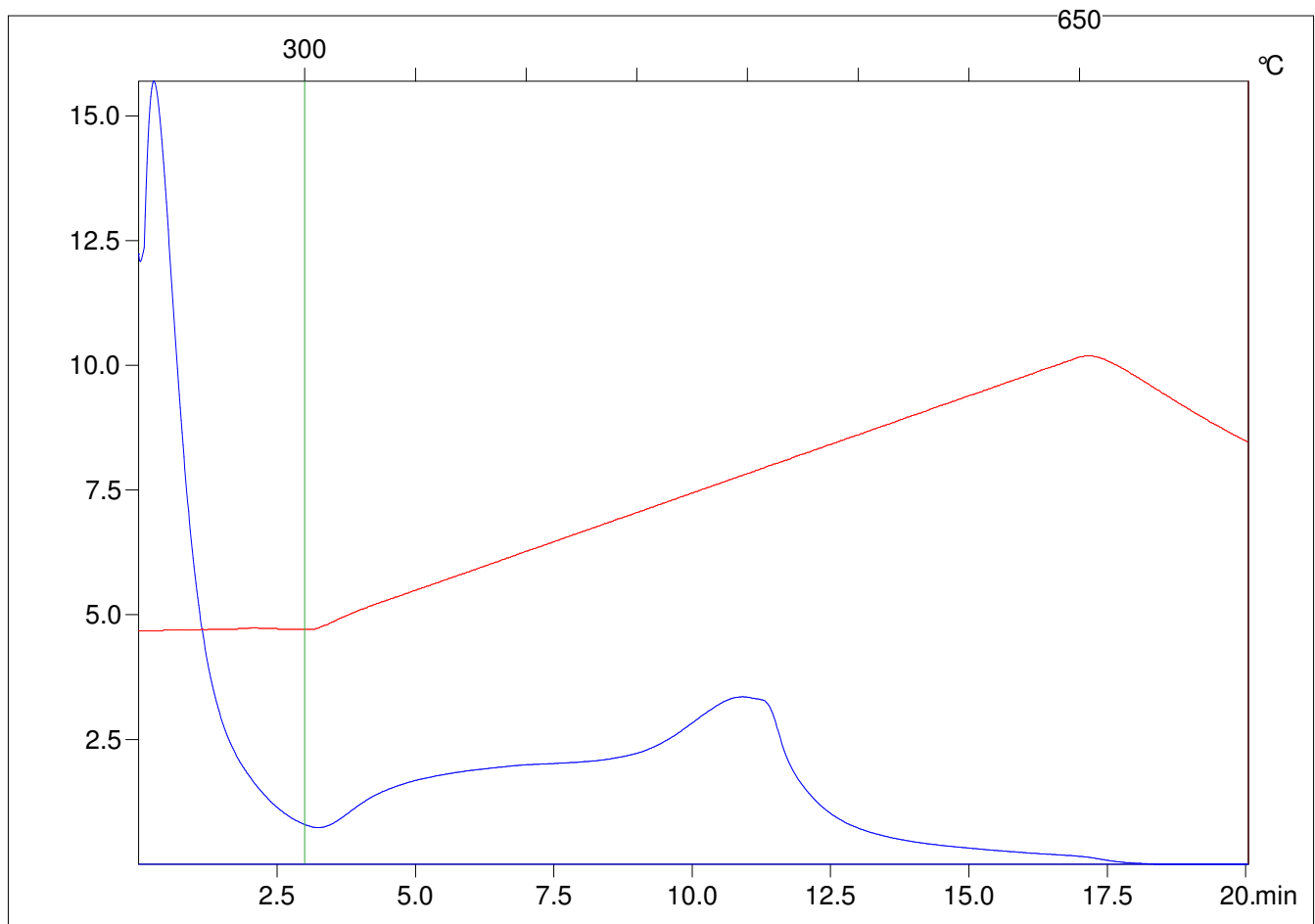
Method =Bulk Rock

Cycle=Basic

KFID(10*9)=1444

Qty =70.9

TOC=2.21



C:\VINCI\PK1792\PK009.R00 : FID pyrolysis graphic

State

Pyro Status

Oxi Status